



Peace of Mind - the most essential thing you would need after a busy day life. A soothing experience that puts your body and mind in total rest. An inner calmness that gives you inexplicable happiness. A harmonious stillness.

For more details:

Ph: 0471-2539933, 6450007. Mob: 9249555111
website: www.sunprojectsindia.com

E-mail:
sunprojectsindia@gmail.com
sunprojectsindia@asianetindia.com



Peace of Mind



Sun
Inspires Life

Sun Projects India Pvt Ltd

TC 4/1044 * Sreebhas *,
Kowdiar, Trivandrum - 3



Sun
Inspires Life

Sun
elegance



Inspires Life

Your life. *Your most precious gift. Fill every moment of it with*

Fun and Laughter. With Colours. With Fragrance. With Peace.

With the blessings of Nature. With the sound of Music.

Find your space amidst the stylish ambience of **Sun Elegance.**



Sun
elegance



An **Elegant** home. For you and your loved ones. In the city.

But in the calm environment you would always love to come back to.

A home for the romantic in you. For playful time with the kids.

For the solitary moments you desire. For the happy family man that you are.

A stylish **Living Space**.



Sun
elegance



Style mounted in a twelve-storey building with 60 flats altogether.

5 each in every floor crafted with architectural precision and safety.

Suited to personal tastes with appropriate price tags.

Comfort. Style. Peacefulness. Elegance.

All blended together in a perfect symphony into an elegant apartment.

Come on. Occupy your **Space.**



Sun
elegance



Dazzling flats in 7 different classifications - A B C D E F G - built with superior grade materials and utmost care, conforming to safety standards and structural specifications. Kitchen is perfectly fused into your home with enough space and comfort for your personal cooking experience. Facilities are many including spacious car park in the premises. To be a part of this sophisticated building environment with all modern comforts in a quiet location in the city is unmistakably next to **Bliss**.



elegance



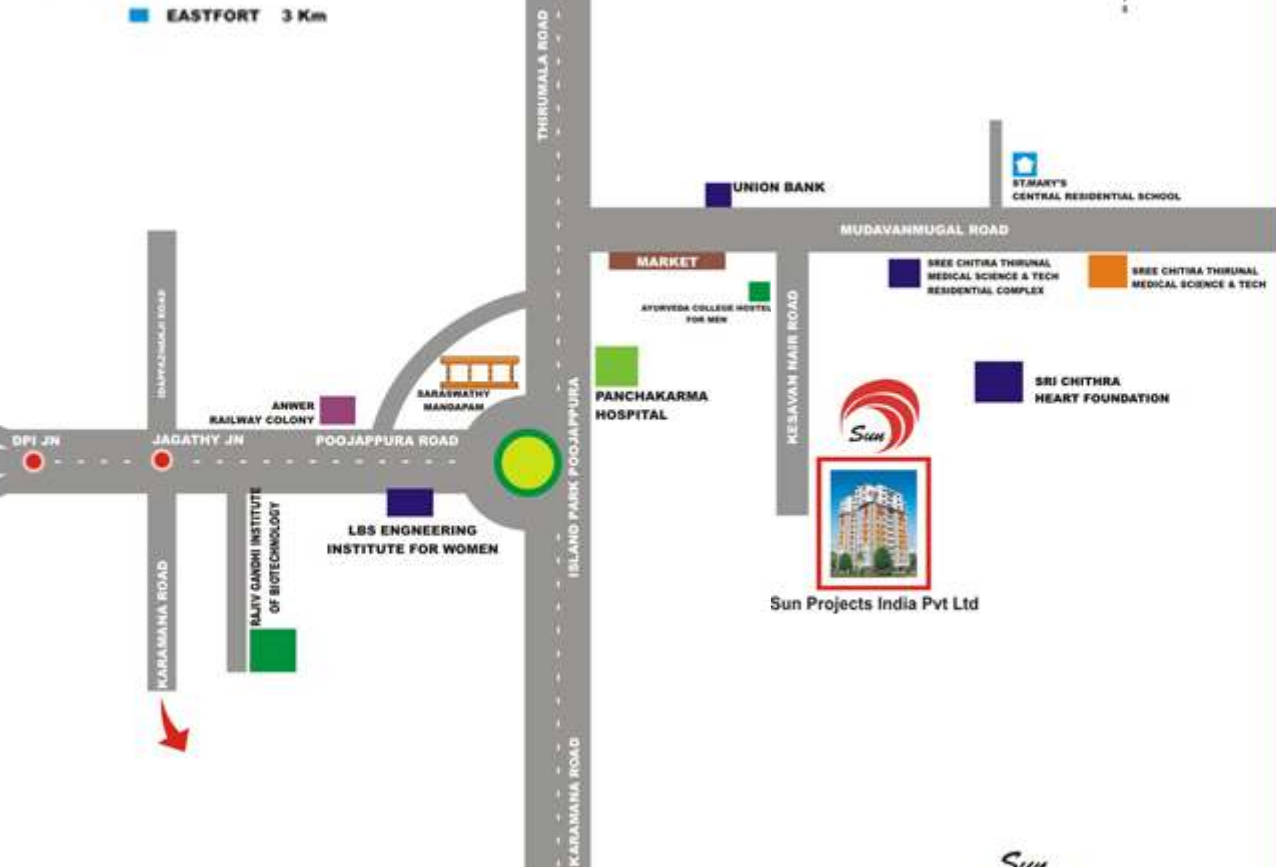
An Elegant address within the city. Yet in a quiet location.

Very near to Sree Chithra Heart Foundation, Poojappura, Thiruvananthapuram.

As the neighbour of one of the super heroes of the Malayalam silver screen.

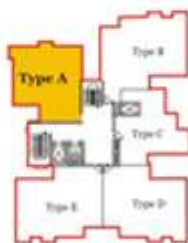
Belong to a superb Address.

-  AIRPORT 16 Km  KOVALAM 16 Km
-  CENTRAL - RAIL - BUS STATION 1.5 Km
-  EASTFORT 3 Km



Location Map

Sun
elegance



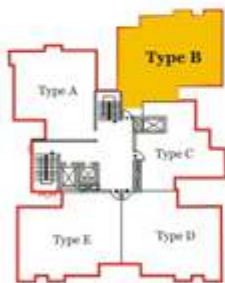
FLOOR PLAN 1-12

Dimensions may vary during construction.
Furniture and fixtures are indicative only.
All dimensions are in centimeters.



Type A

Area: 1033 sq.ft
Two Bedroom Apartment

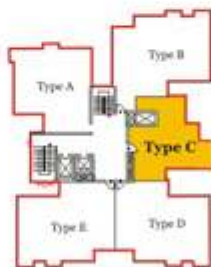
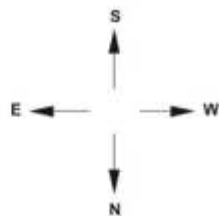


FLOOR PLAN 1-12

Dimensions may vary during construction.
Furniture and fixtures are indicative only.
All dimensions are in centimeters.

Type B
Area: 1263 sq.ft
Three Bedroom Apartment

Sun
elegance



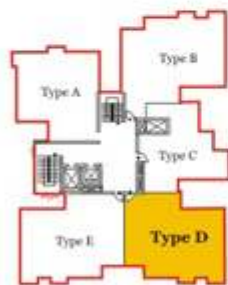
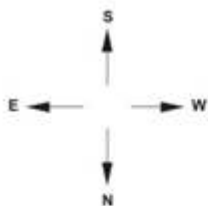
FLOOR PLAN 1-12

Dimensions may vary during construction.
Furniture and fixtures are indicative only.
All dimensions are in centimeters.



Type C

Area: 909 sq.ft
Two Bedroom Apartment



FLOOR PLAN 1-9

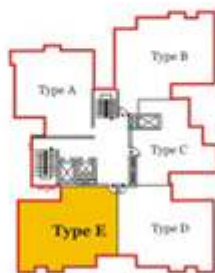
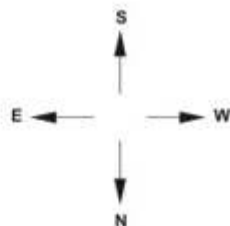
Dimensions may vary during construction.
Furniture and fixtures are indicative only.
All dimensions are in centimeters.



Type D

Area: 1199 sq.ft
Three Bedroom Apartment

Sun
elegance



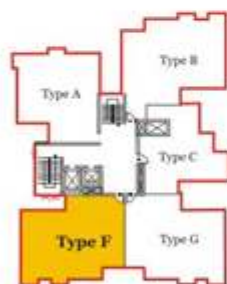
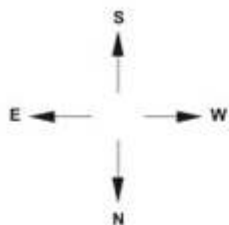
FLOOR PLAN 1-9

Dimensions may vary during construction.
Furniture and fixtures are indicative only.
All dimensions are in centimeters.



Type E

Area: 1200 sq.ft
Three Bedroom Apartment

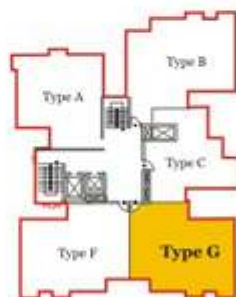
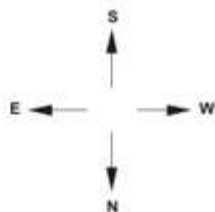


FLOOR PLAN 10-12

Dimensions may vary during construction.
Furniture and fixtures are indicative only.
All dimensions are in centimeters.

Type F
Area: 1089 sq.ft
Two Bedroom Apartment

Sun
elegance



FLOOR PLAN 10-12

Dimensions may vary during construction.
Furniture and fixtures are indicative only.
All dimensions are in centimeters.

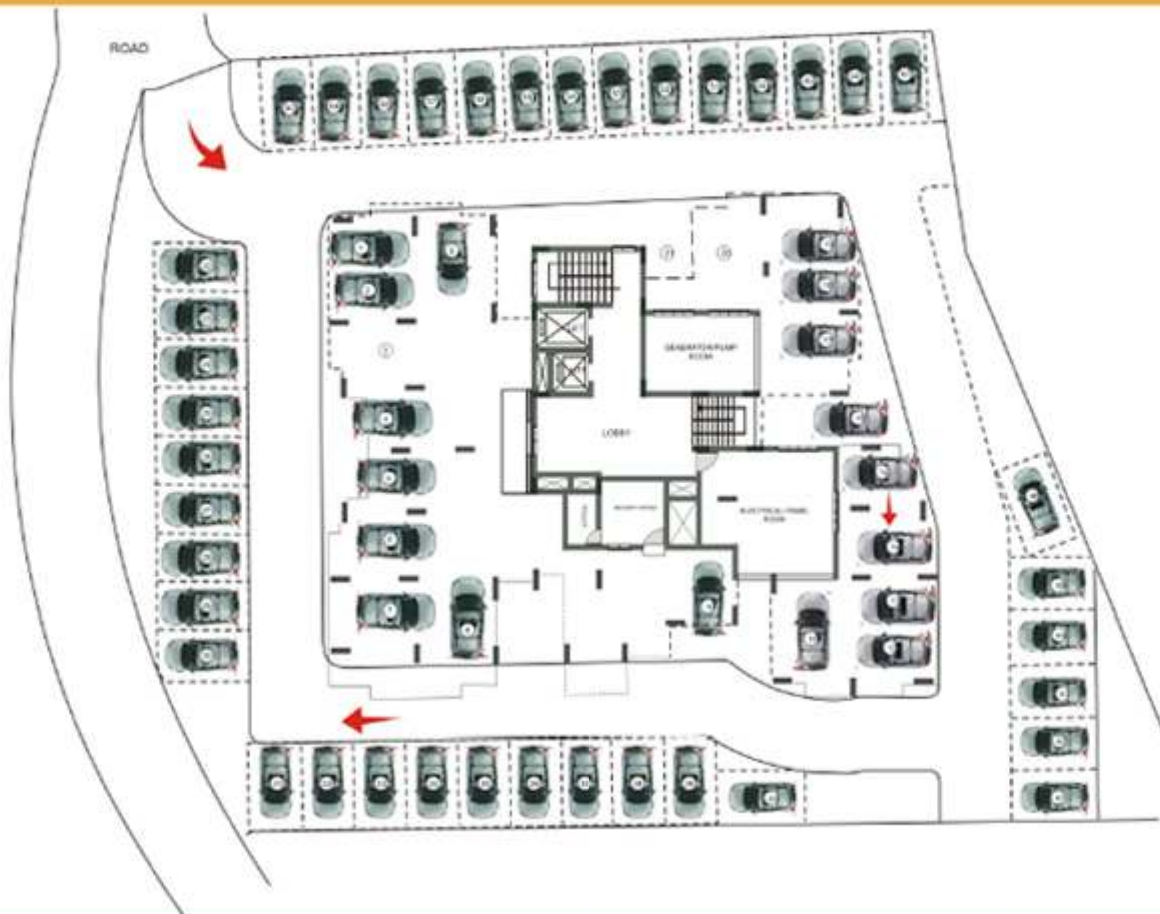
Type G

Area: 1089 sq.ft
Two Bedroom Apartment



At last, when you step in, there begins to dawn a lasting relationship. And we have to give extra care to your property management needs. Our Home Care department will take care of a number of such services you might want after you occupy your space with us. From rental value assessment to collection of deposits and cheques from tenants to periodical cleaning to the best tips on interior design services etc we will manage with pleasure. Because we believe in **relationships.**

CAR PARKING PLAN



SPECIFICATIONS

Sun
elegance

FOUNDATION & STRUCTURE	RCC framed structure with M 20 concrete pile foundation / Earthquake resistant design.
FLOORING	Vitrified / ceramic tiles for the entire apartment.
DOORS	Main door decorative door shutter. Hardwood door frames. Inside door shutters: Moulded wooden door shutters.
WINDOWS	Aluminium powder coated windows with steel grills and fully glazed shutters.
KITCHEN	Counters with granite top and stainless steel sink. Ceramic tiles above counter to a height of 60 cm.
TOILET	Flooring and dadoing to a height of 150 cm with ceramic tiles, concealed piping, white sanitary fittings and CP fittings. Provision for geyser connection in master bathroom.
PAINTING	Putty and OBD finish for all internal walls. Enamel paint for wood and steel works. 2 coat exterior paint for outside walls.
ELECTRICAL	Concealed conduit wiring with copper conductor, adequate light, fan and plug points, controlled by ELCB & MCB's with independent KSES meters.
TELEPHONE	Concealed wiring for one telephone in living room & master bedroom.
CABLE TV	Provision for Cable TV connection in living room.
WATER SUPPLY	Round the clock water supply through sump and overhead tank.
ELEVATOR	Two nos. One Passenger lift & One bed lift.
GENERATOR	Generator back-up for lifts, common area lighting and water pumps. 350 watts to apartments for lighting, fan and TV.
SECURITY	Round the clock security service.
FIRE FIGHTING	Modern fire fighting arrangements.

COMMON FACILITIES

Decorative lobby. Common toilets for servants and drivers. Rooftop party area.
Provision for fitness centre. Provision for meeting hall. Children's play area.